

LOW-PRESSURE CLAMPING TECHNOLOGY

- > wipers to protect against contamination
- > oil supply via fixture body or threaded connection
- > single and double-acting variants

PRODUCT OVERVIEW:

Type	Piston force [kN]	Stroke [mm]	max. operating pressure [bar]	No. of models	Operating mode
6941K	4,0 - 19,8	8,5 - 12,5	70	5	double-acting
6942KK-**	4,9 - 15,9	-	100	4	double acting
6942KK-**L	4,9 - 15,9	-	100	4	double acting
6942KK-**R	4,9 - 15,9	-	100	4	double acting

PRODUCT EXAMPLES:

NO. 6941K



> Clamping force: 3,4 - 15,5 kN

NO. 6942KK



> Clamping force: 3,2 - 7,5 kN

NO. 6942KK-**L

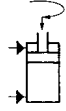


> Clamping force: 3,2 - 7,5 kN

No. 6941K

Swing Clamp

double acting,
max. operating pressure 70 bar,
min. operating pressure 15 bar.



Order no.	Article no.	Clamping force at 70 bar* [kN]	eff. piston area Sp [cm ²]	eff. piston area Lo [cm ²]	Clamping stroke [mm]	Total stroke [mm]	Vol. Sp [cm ³]	Vol. Lo [cm ³]	Q max. [l/min]	Weight [g]
326587	6941K-35-21	3,4	5,8	9,6	8,5	22	8,7	14,5	0,9	670
326603	6941K-35-22	3,4	5,8	9,6	8,5	22	8,7	14,5	0,9	670
326629	6941K-42-21	5,1	8,9	13,9	10,5	25	15,7	24,2	1,6	950
326645	6941K-42-22	5,1	8,9	13,9	10,5	25	15,7	24,2	1,6	950
326660	6941K-50-21	7,0	12,6	19,6	10,5	26	23,9	37,3	2,4	1400
326454	6941K-50-22	7,0	12,6	19,6	10,5	26	23,9	37,3	2,4	1400
326470	6941K-60-21	10,3	18,4	28,3	12,5	29	41,3	63,6	4,1	2100
326496	6941K-60-22	10,3	18,4	28,3	12,5	29	41,3	63,6	4,1	2100
326512	6941K-75-21	15,5	28,3	44,2	12,5	30	67,9	106,0	6,8	3350
326538	6941K-75-22	15,5	28,3	44,2	12,5	30	67,9	106,0	6,8	3350

Sp = clamp, Lo = unclamp

* Clamping force and volume flow specification with clamp arm no. 6941S.

Design:

Cylinder housing is from high-strength aluminium, red anodised. Piston rod case hardened and chrome plated. Wiper at piston rod. Integrated, adjustable restrictor. Supply scope does not include clamping arm. Oil supply via threaded connection or oil channel in the fixture body.

Application:

The swing clamp is used particularly in fixtures in which the workpieces must be freely accessible and loaded from above. Workpieces with difficult shapes can also be clamped using special clamp arms (available on request).

Features:

The swing motion employs a ball guide mechanism.

Note:

The swing clamps can be controlled via the pipe connections or via the channels on the front. In both cases, the existing O-rings must be used for sealing. A surface roughness of less than or equal to Rz 6.3 µm is necessary in the area of the O-rings for the flange surface on the customer's fixture.

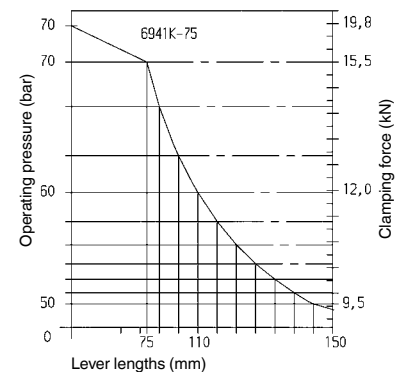
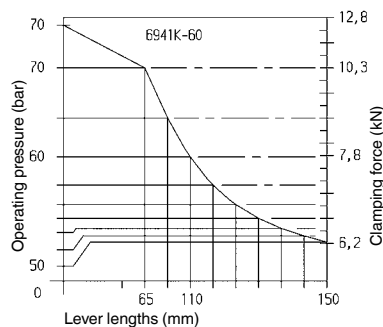
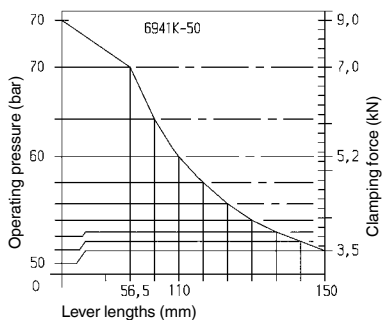
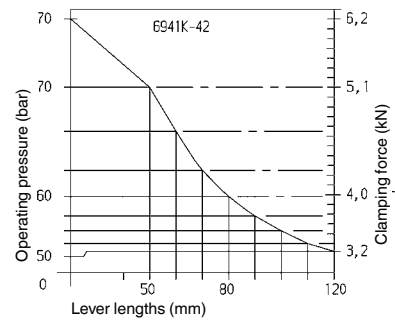
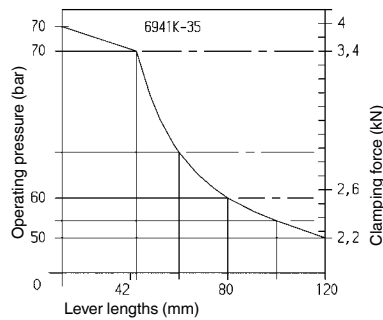
The piston is guided, and so the max. permissible oil flow rate Q max. as well as the clamp arm length and weight must be observed. When mounting accessories at the piston, no force may be applied to the piston. When placing into operation, ensure that all air is bled from the system.

Attention: By the use of the adjustable restrictor please consider a possible pressure intensification!

Operating temperature: 0° - 70° C, Swivel angle: 90° ±3°, Repeatability of the clamping position: ±0,5°.

Diagrams:

The diagrams show the maximum operating pressure relative to the clamping arm length and the resultant clamping force.

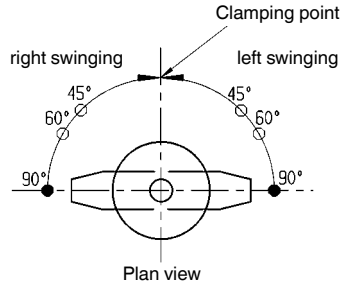


Subject to technical alterations.

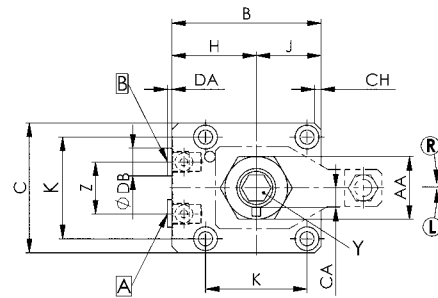
Code of types:

Type 21 = double acting, right swinging
 Type 22 = double acting, left swinging

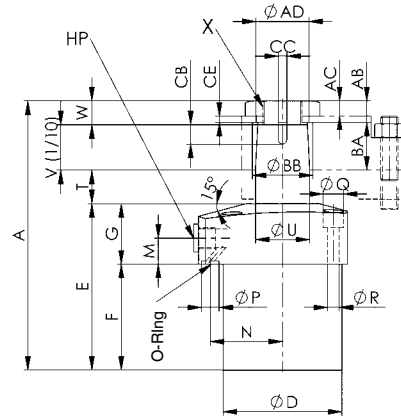
Swing directions:



- = Standard type
- = Special type



- A = clamping
- B = unclamping

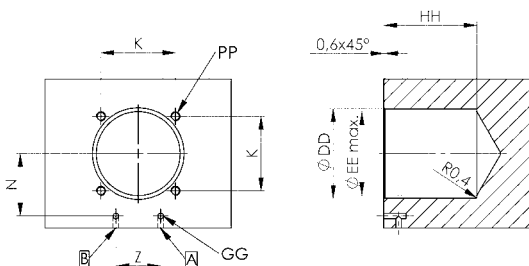


Dimensions:

Order no.	Article no.	A	B	C	ØD -0.1/-0.2	E	F	G	H	J	K	M	N	dia. P	dia. Q	ØR	T	dia. U	V	W	X	Y	Z
326587	6941K-35-21	134	61	51	48	80	52	28	35,5	25,5	40	13	30,0	3	9,5	5,5	30	22,0	14	11	M16x1,5	SW 8	22
326603	6941K-35-22	134	61	51	48	80	52	28	35,5	25,5	40	13	30,0	3	9,5	5,5	30	22,0	14	11	M16x1,5	SW 8	22
326629	6941K-42-21	146	69	60	55	87	59	28	39,0	30,0	47	12	33,5	3	11,0	6,8	27	25,0	20	12	M18x1,5	SW 8	24
326645	6941K-42-22	146	69	60	55	87	59	28	39,0	30,0	47	12	33,5	3	11,0	6,8	27	25,0	20	12	M18x1,5	SW 8	24
326660	6941K-50-21	153	81	70	65	93	63	30	46,0	35,0	55	13	39,5	5	11,0	6,8	28	30,0	20	12	M22x1,5	SW 8	30
326454	6941K-50-22	153	81	70	65	93	63	30	46,0	35,0	55	13	39,5	5	11,0	6,8	28	30,0	20	12	M22x1,5	SW 8	30
326470	6941K-60-21	179	92	80	75	108	71	37	52,0	40,0	63	16	45,0	5	14,0	9,0	31	35,5	26	14	M28x1,5	SW 8	32
326496	6941K-60-22	179	92	80	75	108	71	37	52,0	40,0	63	16	45,0	5	14,0	9,0	31	35,5	26	14	M28x1,5	SW 8	32
326512	6941K-75-21	192	107	95	90	114	74	40	59,5	47,5	75	16	52,5	5	17,5	11,0	32	45,0	32	14	M36x1,5	SW 8	37
326538	6941K-75-22	192	107	95	90	114	74	40	59,5	47,5	75	16	52,5	5	17,5	11,0	32	45,0	32	14	M36x1,5	SW 8	37

Order no.	Article no.	AA	AB	AC	ØAD	BA	ØBB H8	CA	CB	CC H8	CE	DA	dia. DB	CH	HP
326587	6941K-35-21	24	9	6	20,5	15	25	8	5,3	4	6,3	3,5	14	3x45°	G1/8
326603	6941K-35-22	24	9	6	20,5	15	25	8	5,3	4	6,3	3,5	14	3x45°	G1/8
326629	6941K-42-21	30	10	7	22,9	21	28	9	5,3	4	6,3	3,5	14	3x45°	G1/8
326645	6941K-42-22	30	10	7	22,9	21	28	9	5,3	4	6,3	3,5	14	3x45°	G1/8
326660	6941K-50-21	36	10	7	27,9	21	34	11	7,5	6	7,5	4,5	19	4x45°	G1/4
326454	6941K-50-22	36	10	7	27,9	21	34	11	7,5	6	7,5	4,5	19	4x45°	G1/4
326470	6941K-60-21	41	12	8	32,8	27	40	14	7,5	6	8,5	4,5	19	5x45°	G1/4
326496	6941K-60-22	41	12	8	32,8	27	40	14	7,5	6	8,5	4,5	19	5x45°	G1/4
326512	6941K-75-21	50	12	8	41,7	33	49	18	9,5	8	9,5	4,5	22	6x45°	G3/8
326538	6941K-75-22	50	12	8	41,7	33	49	18	9,5	8	9,5	4,5	22	6x45°	G3/8

Installation dimensions:



- A = clamping
- B = unclamping

Article no.	K	PP	ØDD +0,3/0	ØEE max.	N	Z	GG	HH
6941K-35-21	40	M 5	48	45	30,0	22	3	53
6941K-35-22	40	M 5	48	45	30,0	22	3	53
6941K-42-21	47	M 6	55	50	33,5	24	3	60
6941K-42-22	47	M 6	55	50	33,5	24	3	60
6941K-50-21	55	M 6	65	60	39,5	30	5	64
6941K-50-22	55	M 6	65	60	39,5	30	5	64
6941K-60-21	63	M 8	75	70	45,0	32	5	72
6941K-60-22	63	M 8	75	70	45,0	32	5	72
6941K-75-21	75	M10	90	85	52,5	37	5	75
6941K-75-22	75	M10	90	85	52,5	37	5	75

Subject to technical alterations.

No. 6941S

Clamping arm



Order no.	Article no.	Clamping force at 70 bar [kN]	A	B	C	D	E ±0,1	ØF H8	dia. G	H	J	K	L	M	N	P	Q	R	Weight [g]
323345	6941S-35-65	3,4	65,5	35	19	17,5	15	25	20,6 +0,15	28	12	13	42,0	8	M6	38	10	1x45°	180
323360	6941S-42-77	5,1	77,0	38	25	19,0	21	28	23,0 +0,15	34	17	17	50,0	10	M8	42	15	1x45°	310
323386	6941S-50-91	7,0	91,5	50	25	25,0	21	34	28,0 +0,15	40	19	22	56,5	12	M10	47	20	3x45°	480
323402	6941S-60-105	10,3	105,0	58	32	29,0	27	40	32,9 +0,20	47	22	25	65,0	16	M12	52	30	4x45°	810
323428	6941S-75-127	15,5	127,0	75	38	38,0	33	49	41,8 +0,20	53	27	31	75,0	16	M16	56	45	10x45°	1500

Design:

Tempered and blued steel.

Application:

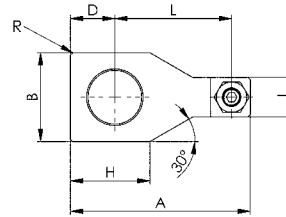
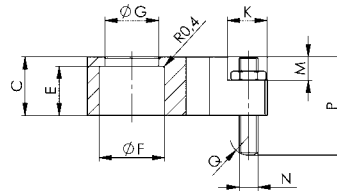
For Swing Clamp no. 6941K.

Note:

Clamping pressure, flow volume and clamp arm weight must be observed, see also installation notes at Swing Clamp no. 6941K.

On request:

Special designs available.



CAD



No. 6941R

Clamping arm blank



Order no.	Article no.	Clamping force at 70 bar* [kN]	A	B	C	D	E ±0,1	ØF H8	dia. G	Weight [g]
323246	6941R-35-95	3,4	95	35	19	17,5	15	25	20,6 +0,15	173
323261	6941R-42-100	5,1	100	38	25	19,0	21	28	23,0 +0,15	304
323287	6941R-50-120	7,0	120	50	25	25,0	21	34	28,0 +0,15	476
323303	6941R-60-125	10,3	125	58	32	29,0	27	40	32,9 +0,20	805
323329	6941R-75-180	15,5	180	75	38	38,0	33	49	41,8 +0,20	1443

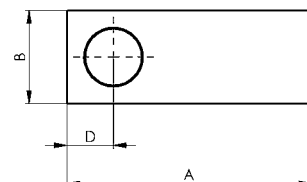
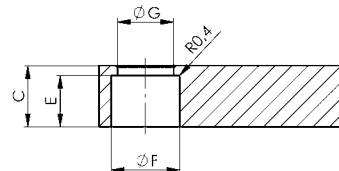
* Clamping force and volume flow specification with clamp arm no. 6941S.

Design:

Steel.

Application:

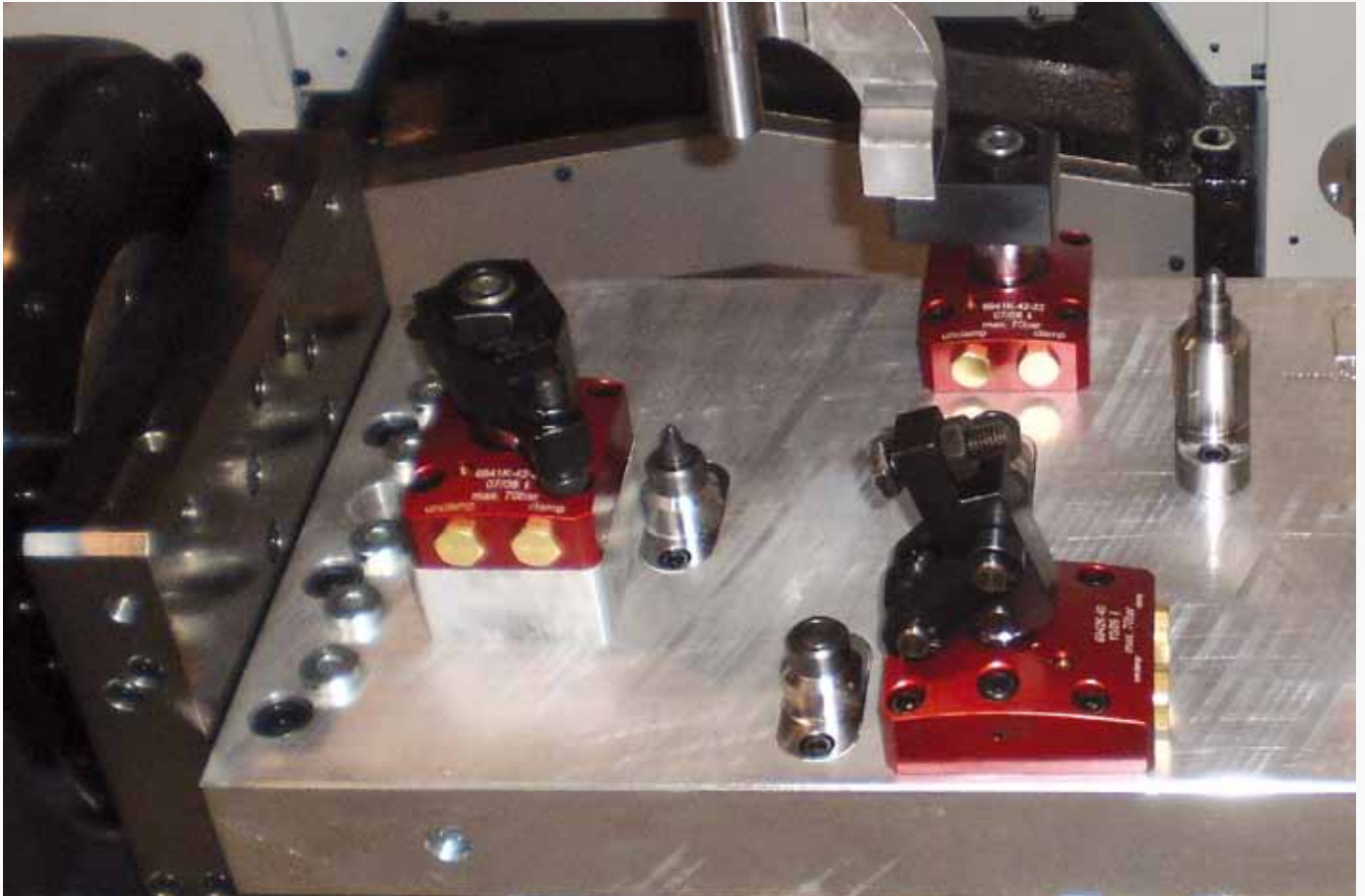
For Swing Clamp no. 6941K.



CAD



Subject to technical alterations.

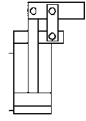


Subject to technical alterations.

No. 6942KK

Link clamp

double acting,
max. operating pressure 100 bar,
min. operating pressure 15 bar.



Order no.	Article no.	Clamping force at 100 bar [kN]	Piston force at 100 bar [kN]	Clamping stroke [mm]	Total stroke [mm]	Extra stroke [mm]	Vol. Sp [cm ³]	Vol. Lo [cm ³]	eff. piston area Sp [cm ²]	eff. piston area Lo [cm ²]	Md max. [Nm]	Weight [g]
327486	6942KK-25	3,2	4,9	17,5	19,0	1,5	8,6	6,6	4,9	3,8	6,0	752
328484	6942KK-32	5,3	8,0	22,5	24,0	1,5	16,5	13,3	8,0	6,5	7,6	1098
328492	6942KK-38	7,5	11,3	24,5	26,0	1,5	27,8	22,9	11,3	9,3	11,0	1549
328583	6942KK-45	10,5	15,9	28,0	29,5	1,5	44,5	35,8	15,9	12,8	13,0	2362

Sp = clamp, Lo = unclamp

Design:

Cylinder housing from steel. Piston and hinge pins from hardened, tempered and nitrided steel. Metal wiper to protect the dirt wiper integrated into the housing. Supply scope includes hinge pins, tension plates, fastening screws but not clamping levers. The threaded connections are suitable for restrictor check valves no. 6916-12-XX. Oil supply via threaded connection or oil channel in the fixture body.

Application:

Link clamps are used in clamping fixtures in which workpieces must be freely accessible and loaded from above. Particularly suitable for clamping in clamping pockets.

Features:

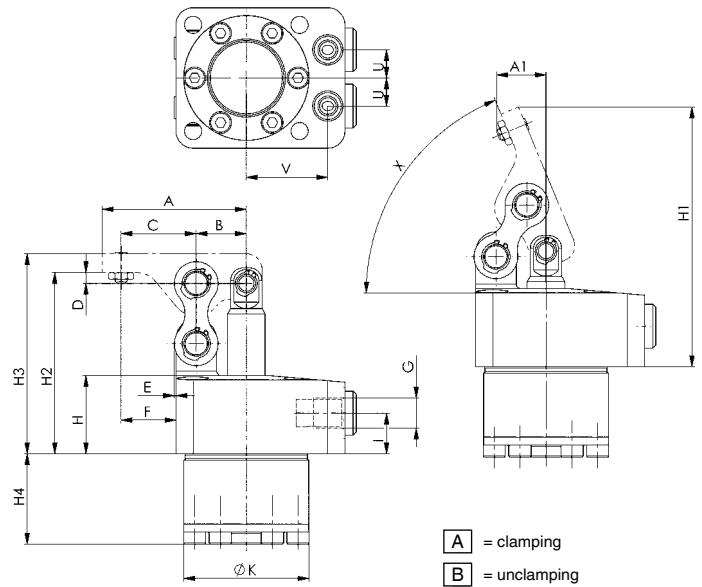
Top flange version, the horizontal centre axis at the standard lever and the pressure point on the workpiece lie in one plane. This prevents relative movement on the workpiece.

Note:

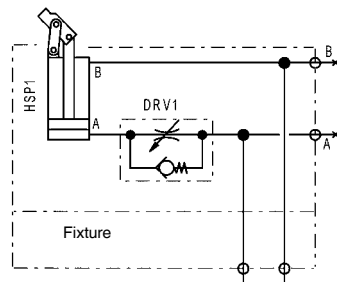
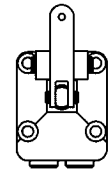
Maximum travel speed 0.5 m/s. The volumetric flow can be regulated via a restrictor check valve

The B to C leverage on the clamping levers is 1 to 1.5!

In the design of blank levers, deviations which lead to higher clamping forces are permitted only in exceptional cases. For sizes 32 and 45, screws with strength class 12.9 must be used.



Installation direction of the clamping arm:



O-ring

Order no.	Dimension [mm]	Weight [g]
161810	7,0 x 1,5	1

Dimensions:

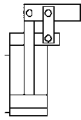
Order no.	Article no.	Piston rod dia. [mm]	Piston dia. [mm]	A	A1	B	C	D	E	F	G	H	H1	H2	H3	H4	I	dia. K	L	M	N	P	O	R	S	U	V	X	ØG2
327486	6942KK-25	12	25	46,00	15,8	16,0	24,0	3,5	0,5	17,5	G1/8	25	83	58,0	64,0	29,0	13	39,9	54	17,0	5,5	12,0	18	34	45	9	26,0	67,5	5,5
328484	6942KK-32	14	32	53,25	13,7	18,5	28,0	3,5	2,0	21,0	G1/8	28	95	66,5	74,5	32,0	13	47,9	61	20,0	5,5	13,5	22	40	51	11	30,0	76,8	5,5
328492	6942KK-38	16	38	60,50	16,0	21,0	31,5	3,0	1,5	22,5	G1/8	28	106	72,0	81,0	37,0	13	54,9	69	23,5	6,5	16,0	24	47	60	12	33,5	72,9	6,8
328583	6942KK-45	20	45	71,00	18,7	24,5	37,0	3,0	2,5	26,5	G1/4	30	124	82,0	96,0	43,5	14	64,9	81	27,5	7,5	19,0	30	55	70	15	39,5	72,9	6,8

Subject to technical alterations.

No. 6942KK-**L

Link clamp

double acting, clamp arm left,
max. operating pressure 100 bar,
min. operating pressure 15 bar.



Order no.	Article no.	Clamping force at 100 bar [kN]	Piston force at 100 bar [kN]	Clamping stroke [mm]	Total stroke [mm]	Extra stroke [mm]	Vol. Sp [cm ³]	Vol. Lo [cm ³]	eff. piston area Sp [cm ²]	eff. piston area Lo [cm ²]	Md max. [Nm]	Weight [g]
327569	6942KK-25L	3,2	4,9	17,5	19,0	1,5	8,6	6,6	4,9	3,8	6,0	752
328500	6945KK-32L	5,3	8,0	22,5	24,0	1,5	16,5	13,3	8,0	6,5	7,6	1098
328518	6942KK-38L	7,5	11,3	24,5	26,0	1,5	27,8	22,9	11,3	9,3	11,0	1549
328609	6942KK-45L	10,5	15,9	28,0	29,5	1,5	44,5	35,8	15,9	12,8	13,0	2362

Sp = clamp, Lo = unclamp

Design:

Cylinder housing from steel. Piston and hinge pins from hardened steel, tempered and nitrided. Metal wiper to protect the dirt wiper integrated into the housing. Supply scope includes hinge pins, tension plates, fastening screws but not clamping levers. The threaded connections are suitable for restrictor check valves no. 6916-12-XX. Oil supply via threaded connection or oil channel in the fixture body.

Application:

Link clamps are used in clamping fixtures in which workpieces must be freely accessible and loaded from above. Particularly suitable for clamping in clamping pockets.

Features:

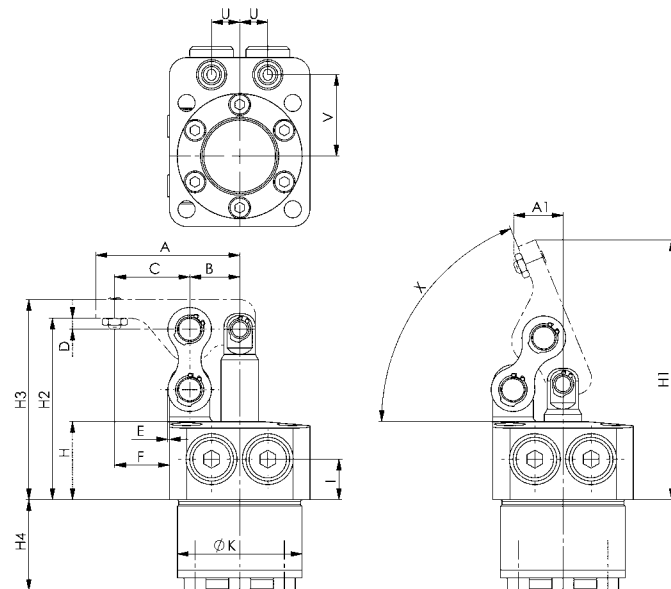
Top flange version, the horizontal centre axis at the standard lever and the pressure point on the workpiece lie in one plane. This prevents relative movement on the workpiece.

Note:

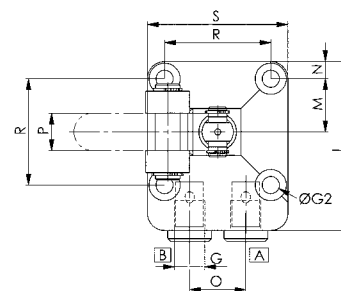
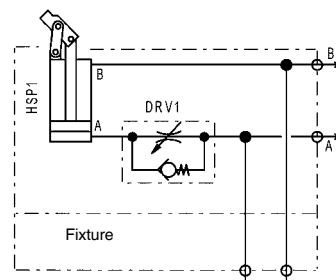
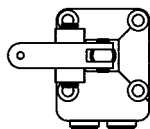
Maximum travel speed 0.5 m/s. The volumetric flow can be regulated via the restrictor check valve

The B to C leverage on the clamping levers is 1 to 1.5!

In the design of blank levers, deviations which lead to higher clamping forces are permitted only in exceptional cases. For sizes 32 and 45, screws with strength class 12.9 must be used.



Installation direction of the clamping arm:



A = clamping
B = unclamping

O-ring

Order no.	Dimension [mm]	Weight [g]
161810	7,0 x 1,5	1

Dimensions:

Order no.	Article no.	Piston rod dia. [mm]	Piston dia. [mm]	A	A1	B	C	D	E	F	G	H	H1	H2	H3	H4	I	dia. K	L	M	N	P	O	R	S	U	V	X	ØG2
327569	6942KK-25L	12	25	46,00	15,8	16,0	24,0	3,5	0,5	17,5	G1/8	25	83	58,0	64,0	29,0	13	39,9	54	17,0	5,5	12,0	18	34	45	9	26,0	67,5	5,5
328500	6945KK-32L	14	32	60,50	16,0	21,0	31,5	3,0	1,5	22,5	G1/8	28	95	66,5	74,5	32,0	13	47,9	61	20,0	5,5	13,5	22	40	51	11	30,0	76,8	5,5
328518	6942KK-38L	16	38	60,50	16,0	21,0	31,5	3,0	1,5	22,5	G1/8	28	106	72,0	81,0	37,0	13	54,9	69	23,5	6,5	16,0	24	47	60	12	33,5	72,9	6,8
328609	6942KK-45L	20	45	71,00	18,7	24,5	37,0	3,0	2,5	26,5	G1/4	30	124	82,0	96,0	43,5	14	64,9	81	27,5	7,5	19,0	30	55	70	15	39,5	72,9	6,8

Subject to technical alterations.

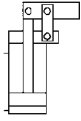
No. 6942KK-**R

Link clamp

double acting, clamp arm right,
max. operating pressure 100 bar,
min. operating pressure 15 bar.



CAD



Order no.	Article no.	Clamping force at 100 bar [kN]	Piston force at 100 bar [kN]	Clamping stroke [mm]	Total stroke [mm]	Extra stroke [mm]	Vol. Sp [cm ³]	Vol. Lo [cm ³]	eff. piston area Sp [cm ²]	eff. piston area Lo [cm ²]	Md max. [Nm]	Weight [g]
327585	6942KK-25R	3,2	4,9	17,5	19,0	1,5	8,6	6,6	4,9	3,8	6,0	300
328526	6942KK-32R	5,3	8,0	22,5	24,0	1,5	16,5	13,3	8,0	6,5	7,6	1098
328534	6942KK-38R	7,5	11,3	24,5	26,0	1,5	27,8	22,9	11,3	9,3	11,0	1549
328625	6942KK-45R	10,5	15,9	28,0	29,5	1,5	44,5	35,8	15,9	12,8	13,0	2362

Sp = clamp, Lo = unclamp

Design:

Cylinder housing from steel. Piston and hinge pins from hardened steel, tempered and nitrided. Metal wiper to protect the dirt wiper integrated into the housing. Supply scope includes hinge pins, tension plates, fastening screws but not clamping levers. The threaded connections are suitable for restrictor check valves no. 6916-12-XX. Oil supply via threaded connection or oil channel in the fixture body.

Application:

Link clamps are used in clamping fixtures in which workpieces must be freely accessible and loaded from above. Particularly suitable for clamping in clamping pockets.

Features:

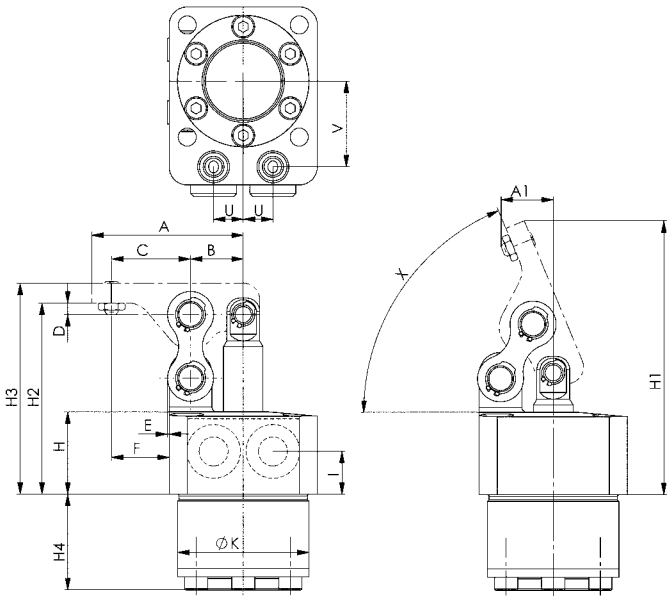
Top flange version, the horizontal centre axis at the standard lever and the pressure point on the workpiece lie in one plane. This prevents relative movement on the workpiece.

Note:

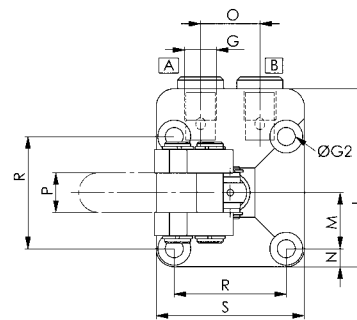
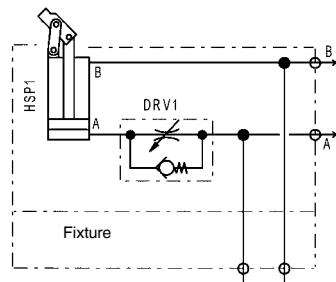
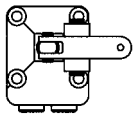
Maximum travel speed 0.5 m/s. The volumetric flow can be regulated via the restrictor check valve

The B to C leverage on the clamping levers is 1 to 1.5!

In the design of blank levers, deviations which lead to higher clamping forces are permitted only in exceptional cases. For sizes 32 and 45, screws with strength class 12.9 must be used.



Installation direction of the clamping arm:



A = clamping
B = unclamping

O-ring

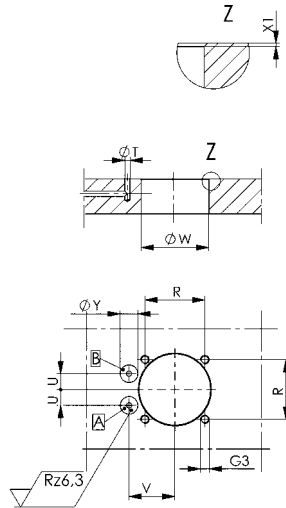
Order no.	Dimension [mm]	Weight [g]
161810	7,0 x 1,5	1

Dimensions:

Order no.	Article no.	Piston rod dia. [mm]	Piston dia. [mm]	A	A1	B	C	D	E	F	G	H	H1	H2	H3	H4	I	dia. K	L	M	N	P	O	R	S	U	V	X	ØG2
327585	6942KK-25R	12	25	46,00	15,8	16,0	24,0	3,5	0,5	17,5	G1/8	25	83	58,0	64,0	29,0	13	39,9	54	17,0	5,5	12,0	18	34	45	9	26,0	67,5	5,5
328526	6942KK-32R	14	32	53,25	13,7	18,5	28,0	3,5	2,0	21,0	G1/8	28	95	66,5	74,5	32,0	13	47,9	61	20,0	5,5	13,5	22	40	51	11	30,0	76,8	5,5
328534	6942KK-38R	16	38	60,50	16,0	21,0	31,5	3,0	1,5	22,5	G1/8	28	106	72,0	81,0	37,0	13	54,9	69	23,5	6,5	16,0	24	47	60	12	33,5	72,9	6,8
328625	6942KK-45R	20	45	71,00	18,7	24,5	37,0	3,0	2,5	26,5	G1/4	30	124	82,0	96,0	43,5	14	64,9	81	27,5	7,5	19,0	30	55	70	15	39,5	72,9	6,8

Subject to technical alterations.

Installation dimensions:



Order no.	Article no.	G3 x depth	R ±0,2	dia. T	U	V	dia. W	X1	dia. Y x max. depth
327486	6942KK-25	M5 x 13	34	3	9	26,0	40,5	0,5 x 45°	10 x 0,1
328484	6942KK-32	M5 x 13	40	3	11	30,0	48,5	0,5 x 45°	10 x 0,1
328492	6942KK-38	M6 x 14	47	3	12	33,5	55,5	0,5 x 45°	10 x 0,1
328583	6942KK-45	M6 x 13	55	3	15	39,5	65,5	0,5 x 45°	10 x 0,1

Order no.	Article no.	G3 x depth	R ±0,2	dia. T	U	V	dia. W	X1	dia. Y x max. depth
327569	6942KK-25L	M5 x 13	34	3	9	26,0	40,5	0,5 x 45°	10 x 0,1
328500	6945KK-32L	M5 x 13	40	3	11	30,0	48,5	0,5 x 45°	10 x 0,1
328518	6942KK-38L	M6 x 14	47	3	12	33,5	55,5	0,5 x 45°	10 x 0,1
328609	6942KK-45L	M6 x 13	55	3	15	39,5	65,5	0,5 x 45°	10 x 0,1

Order no.	Article no.	G3 x depth	R ±0,2	dia. T	U	V	dia. W	X1	dia. Y x max. depth
327585	6942KK-25R	M5 x 13	34	3	9	26,0	40,5	0,5 x 45°	10 x 0,1
328526	6942KK-32R	M5 x 13	40	3	11	30,0	48,5	0,5 x 45°	10 x 0,1
328534	6942KK-38R	M6 x 13	55	3	12	33,5	55,5	0,5 x 45°	10 x 0,1
328625	6942KK-45R	M6 x 13	55	3	15	39,5	65,5	0,5 x 45°	10 x 0,1

No. 6942KL-xx-04

Clamping arm

for link clamp no. 6942KK



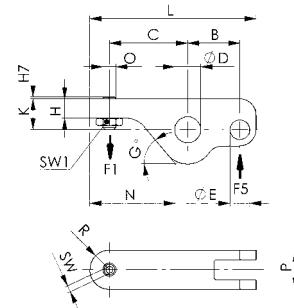
Order no.	Article no.	Piston force F5 at 100 bar [kN]	Clamping force F1 at 100 bar [kN]	B	C	dia. D	dia. E	G	H	H7	K	L	N	O	P	R	SW	SW1	Weight [g]
326850	6942KL-25-04	4,9	3,2	16,0	24,0	8	6	50,0	6	0,5	9,5	51,00	26,2	M4	12,0	6,00	2,0	7	46
328542	6942KL-32-04	8,0	5,3	18,5	28,0	10	8	50,0	8	0,5	11,5	59,25	30,2	M4	13,5	6,75	2,0	7	76
328559	6945KL-38-04	11,3	7,5	21,0	31,5	12	10	47,5	9	0,0	12,0	67,50	34,9	M5	16,0	8,00	2,5	8	99
328641	6942KL-45-04	15,9	10,5	24,5	37,0	16	12	52,5	14	1,0	17,0	80,00	39,6	M6	19,0	9,50	3,0	10	195

Design:

Hardened, tempered and burnished steel. Supplied with compression screw.

Note:

Lever ratios must be respected.



No. 6942KR-xx-14

Clamping arm blank

for link clamp no. 6942KK



Order no.	Article no.	B	C	dia. D	dia. E	G	K	L	N	P	Weight [g]
326975	6942KR-25-14	16,0	44	8	6	50,0	9,5	65,0	40,3	12,0	64
328567	6942KR-32-14	18,5	50	10	8	50,0	12,5	74,5	46,3	13,5	101
328575	6942KR-38-14	21,0	58	12	10	47,5	12,0	86,0	53,4	16,0	130
328666	6945KR-45-14	24,5	68	16	12	52,5	14,0	101,5	61,1	19,0	222

Design:

Hardened, tempered and burnished steel.

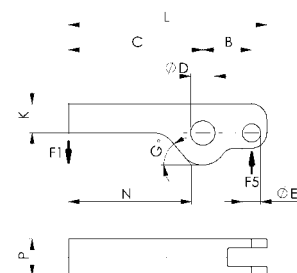
Note:

Lever ratios must be respected.

Formula for determining the clamping force F1:

Clamping force = F1 [kN], Piston force = F5 [kN], Operating lever = B [mm], Load lever = C [mm]

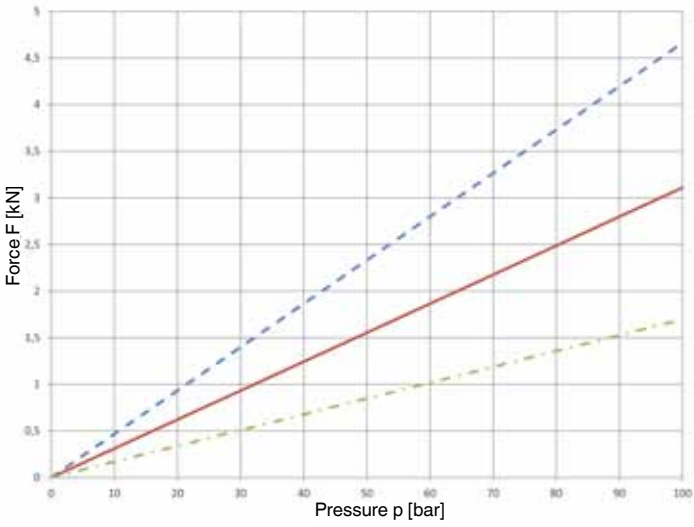
$$F1 = F5 \times B / C$$



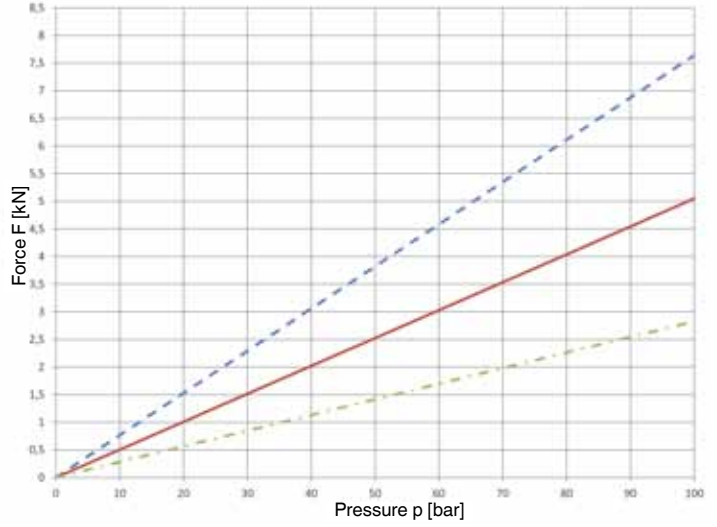
Subject to technical alterations.

Diagrams:

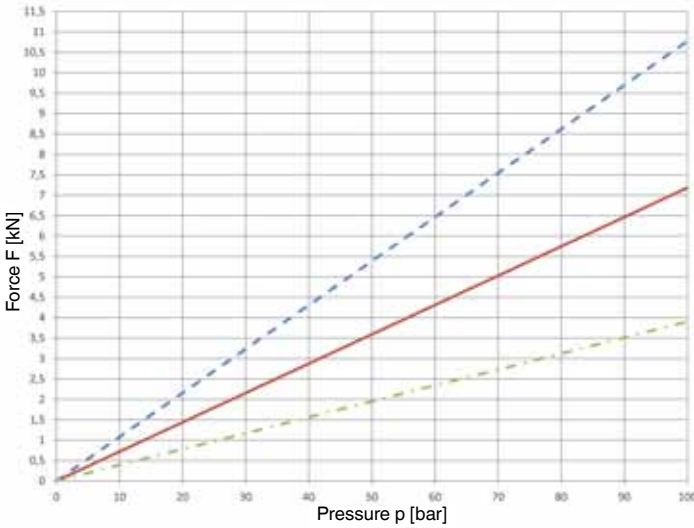
6942KK-25, -25R, -25L



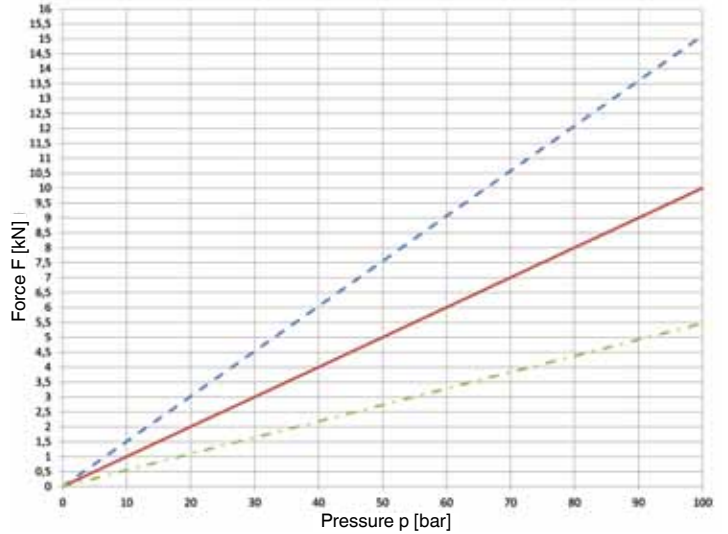
6942KK-32, -32R, -32L



6942KK-38, -38R, -38L



6942KK-45, -45R, -45L



- Hydr. force
- Clamping arm clamping force
- Clamping arm blank clamping force

Subject to technical alterations.